

Finance and Resources Committee

10.00am, Thursday, 15 August 2019

Gas Servitude at Saughton Public Park

Executive/routine	Routine
Wards	7 – Sighthill/Gorgie
Council Commitments	N/A

1. Recommendations

- 1.1 That Committee approves the grant of a Deed of Servitude in favour of Scottish Gas Networks PLC under the terms and conditions outlined in this report.

Stephen S. Moir

Executive Director of Resources

Contact: Greg Manson, Graduate Surveyor/Technician

E-mail: greg.manson@edinburgh.gov.uk | Tel: 0131 529 5774

Report

Gas Servitude at Saughton Public Park

2. Executive Summary

- 2.1 This report seeks Committee approval for the grant of a Deed of Servitude relating to an existing 24-inch diameter gas main approximately 476m in length.

3. Background

- 3.1 Scottish Gas Networks PLC (SGN) have requested a formal Deed of Servitude over an existing gas main at Saughton Public Park, Stevenson Road, shown on the attached plan. The gas main is believed to have been laid by the Council's predecessors prior to the nationalisation of the gas industry in 1950.

4. Main report

- 4.1 Committee approval is sought to grant a Deed of Servitude relating to the existing 24-inch diameter gas main approximately 476m in length on the following terms and conditions:
1. Grantor: City of Edinburgh Council
 2. Grantee: Scottish Gas Networks PLC (SGN)
 3. Rights: The Deed of Servitude will allow SGN rights to lay down, construct, inspect, maintain, protect, use, replace and remove or render unusable a gas main in in the area shaded yellow on the plan.
 4. Fees: The Council's legal and surveyors' fees will be paid by SGN

5. Next Steps

- 5.1 If Committee approval is granted, the Council will enter into a Deed of Servitude with SGN in accordance with the terms and conditions stated within this report.

6. Financial impact

- 6.1 The Council's legal and surveyors' fees will be met by SGN.

7. Stakeholder/Community Impact

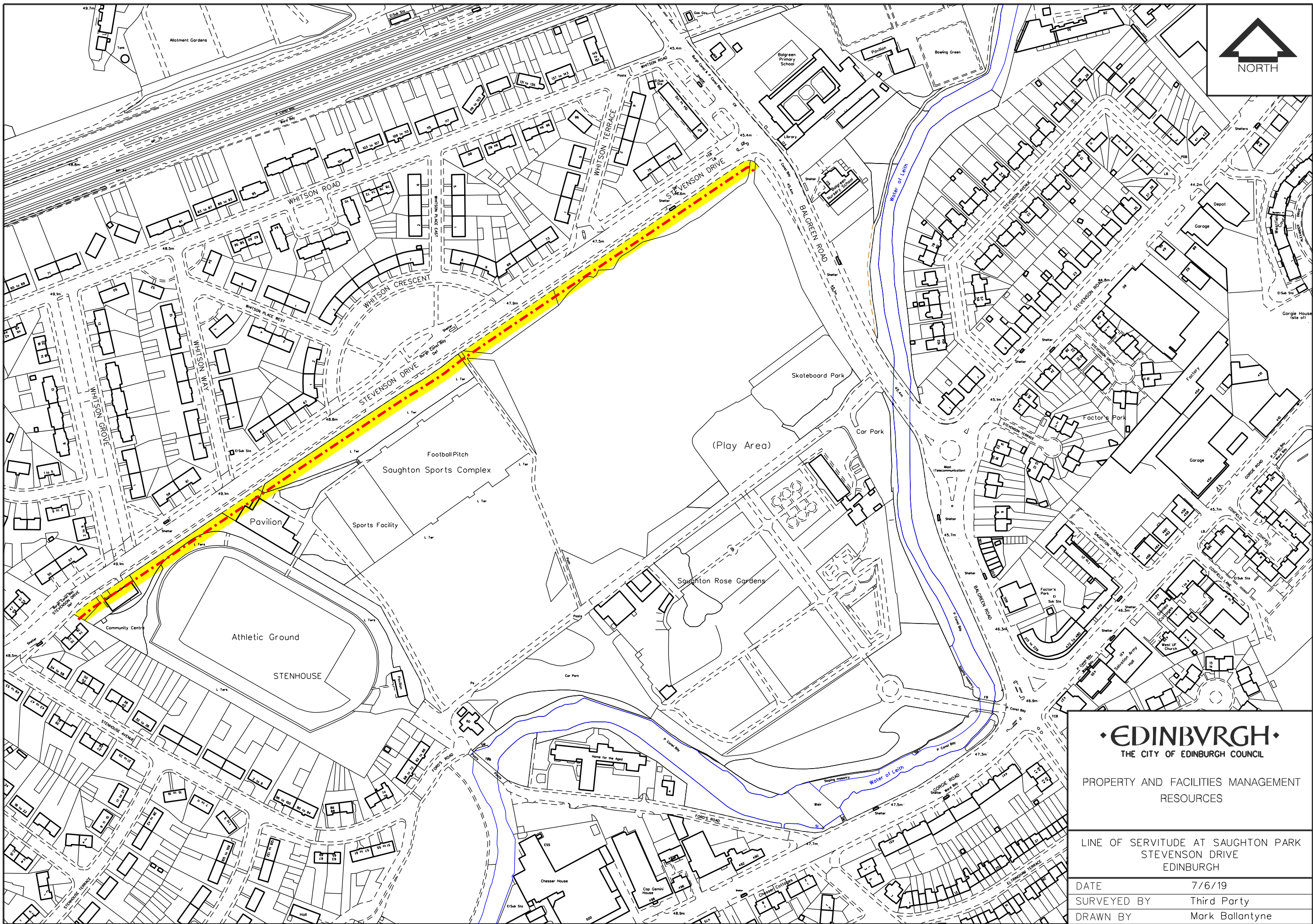
- 7.1 The gas main currently supplies residents and businesses in the surrounding area.
- 7.2 Council Parks officers from the south west neighbourhood office have been consulted and are in support of the project.
- 7.3 The impact on equalities has been considered. The Integrated Impact Assessment (IIA) checklist has been completed and the outcome is that a full IIA is not required for this report. There is little relevance to equality and no negative impact on the environment given the services provided by the gas main.

8. Background reading/external references

- 8.1 N/A

9. Appendices

- 9.1 Appendix 1 – Location Plan



EDINBURGH
THE CITY OF EDINBURGH COUNCIL

PROPERTY AND FACILITIES MANAGEMENT
RESOURCES

LINE OF SERVITUDE AT SAUGHTON PARK
STEVENSON DRIVE
EDINBURGH

DATE	7/6/19
SURVEYED BY	Third Party
DRAWN BY	Mark Ballantyne
SCALE	1:2500 @ A3 SIZE
NEG. NO.	A3/2136

SITE PLAN

SCALE 1:2500

THIS MAP IS REPRODUCED FROM ORDNANCE SURVEY MATERIAL WITH PERMISSION OF ORDNANCE SURVEY ON BEHALF OF THE CONTROLLER OF HER MAJESTY'S STATIONARY OFFICE CROWN COPYRIGHT. UNAUTHORISED REPRODUCTION INFRINGES CROWN COPYRIGHT LICENCE NUMBER 100023420. CITY OF EDINBURGH 2013 AND MAY LEAD TO PROSECUTION OR CIVIL PROCEEDINGS.